



COME

to the Edge

Awakening to the
Encounter with Mystery

**Engaging
with the
Stories of
Venerable
Nano Nagle
and Blessed
Edmund
Rice**

RUAH 2015

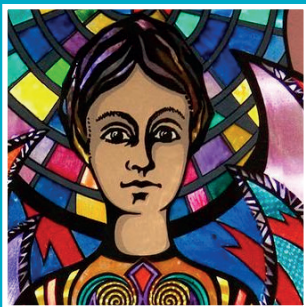
June 14th to June 27th, 2015
in Ireland

Welcome to RUAH 2015

The RUAH 2015 Programme will take place from June 14th to June 27th, 2015, in Ireland. We, the RUAH Team Members, invite you to experience a new spiritual awakening in the land of Venerable Nano and Blessed Edmund.

RUAH is a Hebrew word which means "Spirit".

Our daily lives are immersed in Mystery. Mystery is encountered in those moments when we feel awakened and alive. Nano and Edmund lived in the Ireland of the 18th and 19th centuries. Their stories were shaped by their experience of Mystery among the people with whom they lived.



What is RUAH?

The RUAH 2015 programme offers a break from your daily routine and concerns. It is also an opportunity to explore limits and challenge fears. This is what spiritual awakening and renewal is about.

The programme includes the following elements:

- a week-long facilitated series of reflections on how we encounter Mystery in our lives with Margaret Silf, writer and retreat director, as guide;
- opportunities to meet and engage with various groups whose ministries and practices reflect deep spiritual commitments;
- pilgrimages to places that will evoke a sense of the spiritual in the living traditions and history of Irish people;
- time for private reflection and rest;
- engagement with the stories of Nano and Edmund in those places hallowed by their memory, Cork, Callan, Ballygriffin and Waterford;
- processes that will facilitate the integration of your RUAH experiences in your life;
- involvement with social and spiritual ministry with poor people (homeless, asylum-seekers, migrants).



Margaret Silf

"We cannot enclose the mystery. It will always break out of our sealed containers, whether these containers are our own private worlds, or the formulas of doctrinal religion., or the institutions of a carefully ordered society. It will always be bigger than anything we can invent to keep it contained."

Margaret Silf, *Sacred Spaces*, 2005



What shapes RUAH 2015?

We believe that at the heart of our contemporary spiritual search lies an encounter with the Mystery we call God, across cultures, religions, experiences and communities.

We are also convinced that our new story of origins, what we call the new Universe Story, has widened the horizons for our reflection and experiences.

We belong to Mystery and are enfolded by Mystery within the story of the Universe itself.

We believe that reflection on the stories of Nano and Edmund can prompt new insights and an awareness of how Spirit touches our lives.

What is exciting about RUAH 2015?

Three things excite us.

- First, our week-long programme with Margaret Silf. Margaret has had a long and profound engagement with Ignatian Spirituality. In her writing, retreats and books she invites participants to undertake a journey to the deepest desires of the heart.
- Second, RUAH 2015 will be based for its first week in city of Galway. Galway in the month of June vibrates with excitement and pulsates with spiritual and artistic energies. RUAH 2015 during its stay in Galway will be a city-wide experience.
- Third, we are excited about our new configuration for the pilgrimage experiences in Callan, Waterford, Ballygriffin and Cork. These experiences are centred on the theme of encountering mystery and going to the edge of our existence.



RUAH Team

Joe, Donal,
Kathleen, Anne,
Bede (Missing:
Monica)

Where will we be staying?

- In Galway, on the campus of the National University of Ireland Galway (NUIG) at the Corrib Village Apartments (by the river);
- In Waterford, at the Waterford Institute of Technology (WIT) Student Accommodation at Manor Village;
- In Ballygriffin, at the Nano Nagle Centre and at the Hibernian Hotel in nearby Mallow;
- In Cork, at the Cork University Student Accommodation at Victoria Cross.

What do I need to bring?

- clothing for an Irish Summer which can be warm but cold for those coming from warmer climates;
- light rain gear;
- good strong walking shoes;
- personal dietary and medical items;
- sufficient money for personal and internal travel expenses;
- notebook, pens, etc;
- pocket Bible and/or New Testament.



View from Nano Nagle Centre, Ballygriffin

When does the programme start?

The programme starts on June 14th, 2015 in Galway. Please arrange for travel to the Corrib Village Apartments, Newcastle, Upper Newcastle, Galway City. Registration takes place at Corrib Village Apartments between 4.00pm and 6.00pm on the afternoon of June 14th. Travel to Galway from Dublin Airport direct is facilitated by direct airport transfer to Galway by bus companies. Otherwise, there are trains and express buses (GoBus, Citylink, Bus Éireann) to Galway.

When does the programme end?

The programme ends in Cork city on Saturday, June 27th. Please make arrangements for any further personal travel and/or your return to Dublin. All other travel arrangements will be provided by the programme.

Programme (Sunday, June 14th to Saturday, June 27th)

	Su	M	T	W	Th	F	S	Su
Week 1	Galway							Travel
Week 2	Su	M	T	W	Th	F	S	
	Mount Sion							
			Ballygriffin					
					Cork City			

Cost of the Programme: €1950

This includes meals, accommodation, travel during RUAH, the programme in Galway and at the pilgrimage sites. Visa fees and other related fees to be paid by the participant.

Further Information

Please consult the *website ruah2015.net*

Email *ruah2015@gmail.com*

Phone : +35318973300